

MINI CRAWLER CRANE



MC305C-3

6,560 lb
Maximum Capacity

- 5 SECTION BOOM - 41.0' (12.5m)
- BOOM TIP SEARCHER HOOK (option)
- RUBBER TRACKS
- 2 SPEED TRAVEL & CRANE FUNCTIONS
- MOMENT LIMITER DIGITAL LOAD SYSTEM
- ANTI TWO BLOCK, TILT SENSOR ALARM
- 360° SWING
- AUTOMATIC HOOK STOWAGE
- OPERATOR'S SEAT WITH CENTRALIZED CONTROLS
- REMOTE CONTROL WITH LOAD CAPACITY DISPLAY
- EPA COMPLIANT DIESEL ENGINE, DUAL POWER
- ELECTRIC MOTOR (option)



Specifications

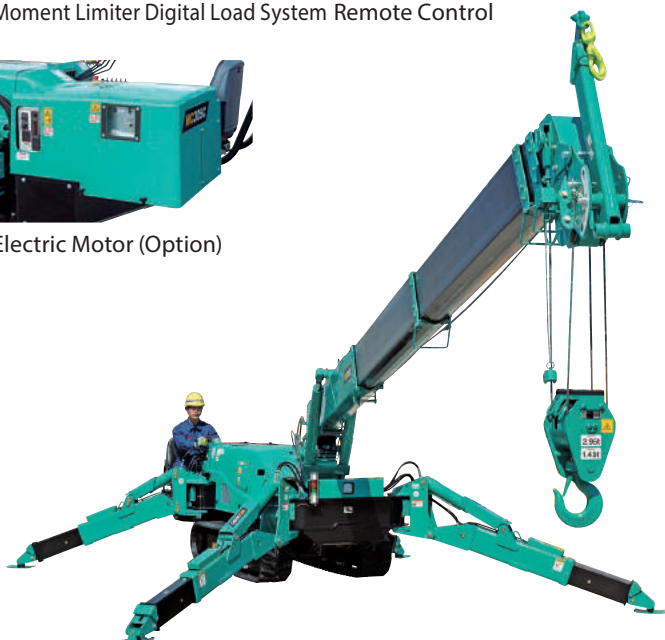
Model		MC305C-3	
Maximum Capacity		6,560lb (2,980kg)	
Maximum Working Radius		39.8'	
Maximum Lifting Height		41.0'	
Hook Speed		44.3 ft./min 4 Part/4th Layer	
Hoist Rope		IWRC 6 x WS(26) 8mm x 240'	
Boom System	Type	Automatic 5 Section, Pentagonal Telescopic	
	Length	12.1' - 41.0'	
	Telescopic Stroke / Speed	28.8' / 26 sec	
Boom Hoist Angle / Speed		0° - 80° / 14.5 sec	
Swing Radius / Speed		360° / 2.4 RPM	
Travel Crawler System	Drive		Hydraulic Motor, Stepless Speed Changer
	Travel Speed		0 - 1.74 mph
	Gradability		20° Design Limit 15° Set Limit
	Ground Pressure		5.40 PSI Diesel Model 5.59 PSI Electric Dual Power Model
Engine	Type		Yanmar 3TNV80F-SNMB 4 Cycle, 3 Cylinder, Water Cooled
	Rated Output		20.38 hp / 2400 min-1, 20.7 ps / 2400 RPM
	Fuel Tank		10.5 Gallon
Electric Motor (Dual Power)	Type		Totally Enclosed Fan Cooled Motor
	Size		5.5 kw, 4P, 230V, 3 phase, Inverter 30 hz - 60 hz
Remote Control	Standard	Cable Remote Control, Crane & Outrigger Operation, Graduated Micro Speed, Load & Rated Load LCD Display	
Dimensions	Stowed L x W x H		L 13'9" x W 4'3" x H 6'5"
Net Weight			Diesel Model 8,600 lb. Electric Dual Power + 300 lb.
Optional Equipment			Boom Tip Searcher Hook, Wireless Remote, White Rubber Tracks, Single Part Ball/Hook, Man Basket, Rotation Resistant Wire Rope, Oktopus Glass Lifter/Manipulator, Custom Paint Color, Exhaust Scrubber, Transport Trailer, Outrigger Pads Searcher Hook 1,870lb (850kg) / 3,300lb (1,500kg)



Moment Limiter Digital Load System Remote Control



Electric Motor (Option)

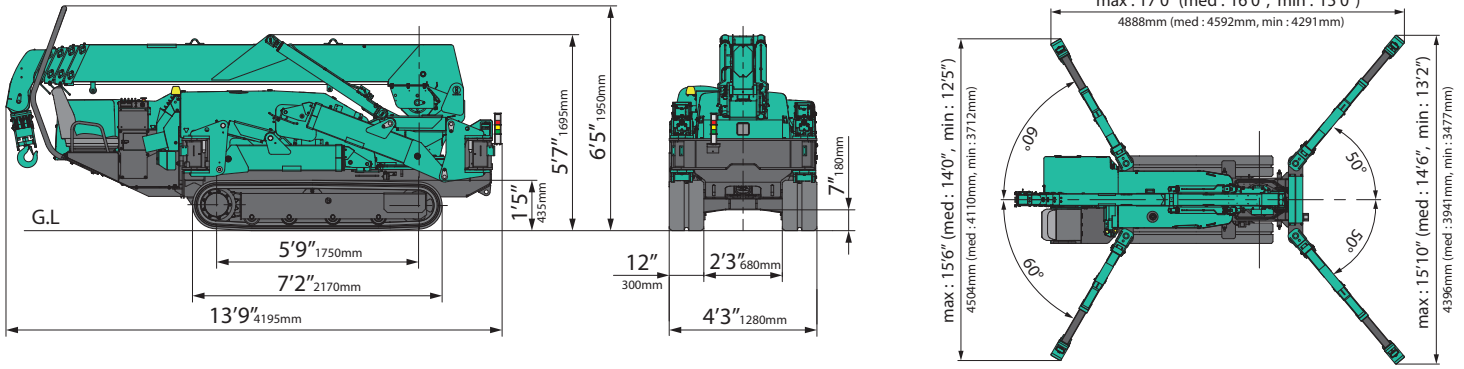


YELLO EQUIPMENT

MAEDA AUTHORISED DEALER

P: 409-770-3091 W: YELLOEQUIPMENT.COM

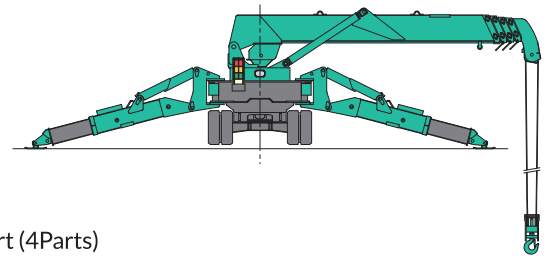




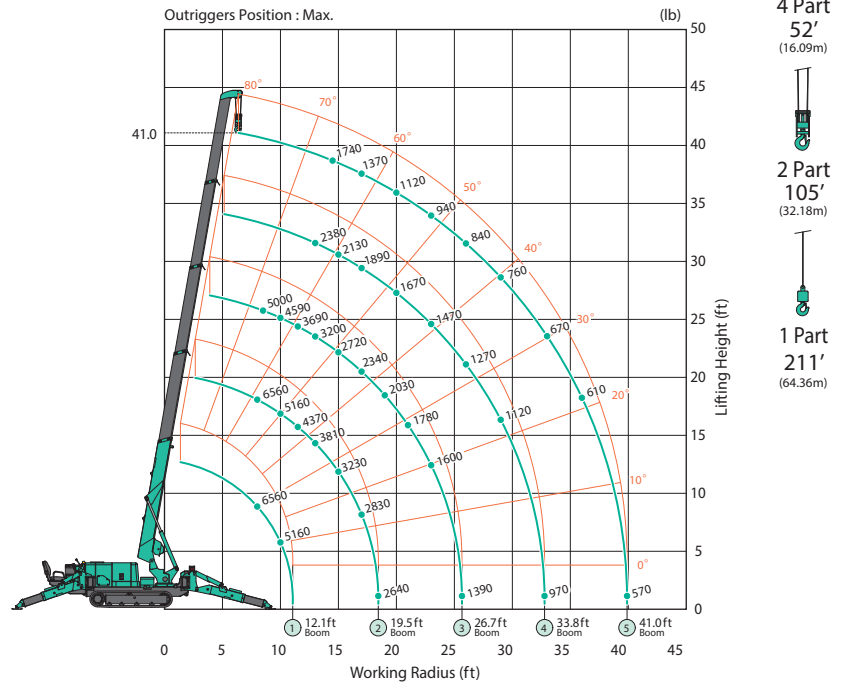
Rated Total Load Chart

MAXIMUM Outriggers, 4 Part Line					
Boom Length	12.1Ft.	12.2 - 19.5 Ft.	19.6 - 26.7 Ft.	26.8 - 33.8 Ft.	33.9 - 41.0 Ft.
Radius (Ft.)	Load (Lbs.)	Load (Lbs.)	Load (Lbs.)	Load (Lbs.)	Load (Lbs.)
8.0	6560	6560			
8.5	6280	6280	5000		
10.0	5160	5160	4590		
11.5		4370	3690		
13.0		3810	3200	2380	
14.5		3350	2830	2200	1740
15.0		3230	2720	2130	1690
17.0		2830	2340	1890	1370
18.0		2640	2180	1790	1270
19.0			2030	1730	1190
20.0			1890	1670	1120
21.0			1780	1610	1050
23.0			1600	1470	940
25.5			1390	1300	850
26.0				1270	840
29.0				1120	760
32.5				970	680
33.0					670
36.0					610
39.5					570

MAX. Reach Below Grade



Working Range Chart (4Parts)



MEDIUM Outriggers, 4 Part Line					
Boom Length	12.1Ft.	12.2 - 19.5 Ft.	19.6 - 26.7 Ft.	26.8 - 33.8 Ft.	33.9 - 41.0 Ft.
Radius (Ft.)	Load (Lbs.)	Load (Lbs.)	Load (Lbs.)	Load (Lbs.)	Load (Lbs.)
8.0	6560	6560			
8.5	6260	6260	5000		
10.0	5100	5100	4530		
11.5		4310	3690		
13.0		3750	3160	2330	
14.5		3140	2790	2120	1710
15.0		2950	2670	2060	1670
17.0		2360	2250	1840	1350
18.0		2160	2100	1760	1240
19.0			1900	1690	1150
20.0			1700	1630	1070
21.0			1550	1550	1010
23.0			1340	1380	900
25.5			1150	1140	810
26.0				1100	790
29.0				920	710
32.5				780	640
33.0					630
36.0					570
39.5					550

MINIMUM Outriggers, 4 Part Line					
Boom Length	12.1Ft.	12.2 - 19.5 Ft.	19.6 - 26.7 Ft.	26.8 - 33.8 Ft.	33.9 - 41.0 Ft.
Radius (Ft.)	Load (Lbs.)	Load (Lbs.)	Load (Lbs.)	Load (Lbs.)	Load (Lbs.)
8.0	6560	6560			
8.5	6260	6260	5000		
10.0	5050	5050	4530		
11.5		3950	3690		
13.0		3200	3060	2300	
14.5		2600	2550	2120	1710
15.0		2440	2390	2060	1670
17.0		1970	1890	1820	1350
18.0		1800	1740	1700	1240
19.0			1580	1570	1150
20.0			1430	1460	1070
21.0			1300	1350	1010
23.0			1120	1160	890
25.5			950	970	810
26.0				940	790
29.0				770	710
32.5				660	640
33.0					630
36.0					530
39.5					460

The Rated Total Load is based on the actual working radius including boom deflection. Due to wire rope strength and other limitations, when using two part or single part hooks use the appropriate four part Rated Total Load Chart above but with maximum load of:

Two Part - 3,260 lb. Single Part - 1,650 lb.

This Rated Total Load Chart is supplied for reference only. Operator and all personnel must refer to the actual crane Rated Total Load Chart to determine allowable machine lifting and operating procedures. We are constantly improving our products and reserve the right to change design and specifications at any time.

ASME B 30.5 compliant