

HYDRAULIC CRAWLER CRANE



CC1485S

13,220lb
Maximum Capacity

- CRANE INTERLOCK, AUTOMATIC FUNCTION KICKOUT
- PROGRAMMABLE WORKING ENVELOPE AREA LIMITS
- PICK & CARRY - 4,400LB
- EPA TIER 4 FINAL ENGINE
- JOY STICK CONTROLS
- REAR FACING CAMERA
- FLY JIB WITH OFFSET (option)
- RUBBER TRACK PADS, BLACK OR GRAY NON-MARKING (option)
- ZERO TAIL SWING FRONT & REAR



Pick & Carry Duty 4,400lb



Programmable Moment Limiter



Minimal Tail Swing



Rear View Monitor



Specifications

	Model	CC1485S-1
Crane capacity & reach	Crane max. capacity	13,220 lb (6,000 kg)
	Max. working radius	53.0' (16.1 m)
	Max. lifting height	55.0' (16.7 m), 72.0' (22.0 m) with fly jib
	Max. reach below ground level	80' (24.5 m), 165' (50.5 m), 340' (103.5 m), 4-2-1 part
	Max. pick & carry capacity	4,400 lb (2,000 kg)
Weight & dimension	Machine weight	31,750 lb (14,400 kg) +660 lb (300 kg) fly jib
	Overall length x width x height	21'6" (6,460 mm) x 8'2" (2,490 mm) x 9'5" (2,865 mm)
	Crawler standard pad width	1'8" (500 mm)
	Swing radius /tail swing	5'1" (1,550 mm) / 1'0" (305 mm) over side only
2 Speed winch system	Hook block	standard 3 sheave hook block for 4 & 2 part reeving
	Hook block speed low/high	105' (32.0 m) / 151' (46.0 m) ft/min, 4th layer -4 part
	Hoist wire rope standard	IWRC 6 x Fi (29) φ10mm x 377' (115 m)
Telescopic system	Boom type	Fully automatic 5-section heptagonal telescopic boom
	Main boom length min./max	15'6" (4,745 m) ~ 53'4" (16,265 m)
	Boom telescoping to full stroke	37'9" (11.52 m) / 33 sec
Boom hoist system	Hoist angle / time	-4 ~ 80 degree / 19 sec
Swing system	Slew angle / time	360deg / 1.9rpm
Drive system	2 speed travel low/high	low 1.18 mph (1.9 km/h) / high 1.99 mph (3.2 km/h)
	Gradability	20 degree set limit
	Ground pressure w/ std. pad	7.11 psi (.50 kgf/cm ²)
Diesel engine	Model	ISUZU 4LE2XDPC
	Emission level	EPA tier 4 final
	Displacement	2.179 L (2,179 cc)
	Rated output	54.04 hp (40.3 kw / 2,000mi/h)
	Fuel / fuel tank capacity	30.8 gallons (140 L)
Standard safety features & performance devices		Anti Two-Block, Winch Low Cable Auto-Stop, Tilt/Inclination Alarm, EMO Switch, Moment Limiter Digital Load System w/ Auto Stop & Working Area Limits, Engine / Machine Performance Monitor, Working Status Lamp, Rear View Camera, Data Logger, Work & Boom Lights
Optional Equipment		Rubber Pads, Custom Paint Color, Fly jib 1,800 lb (820kg)

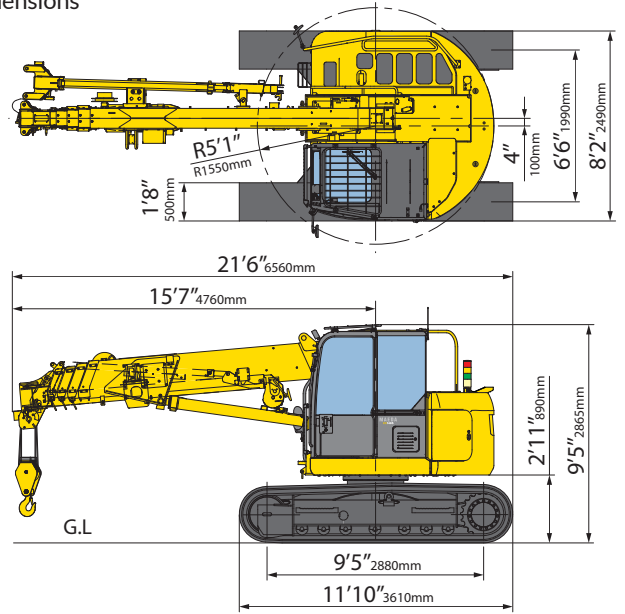
YELLO EQUIPMENT

MAEDA AUTHORISED DEALER

P: 409-770-3091 W: YELLOEQUIPMENT.COM



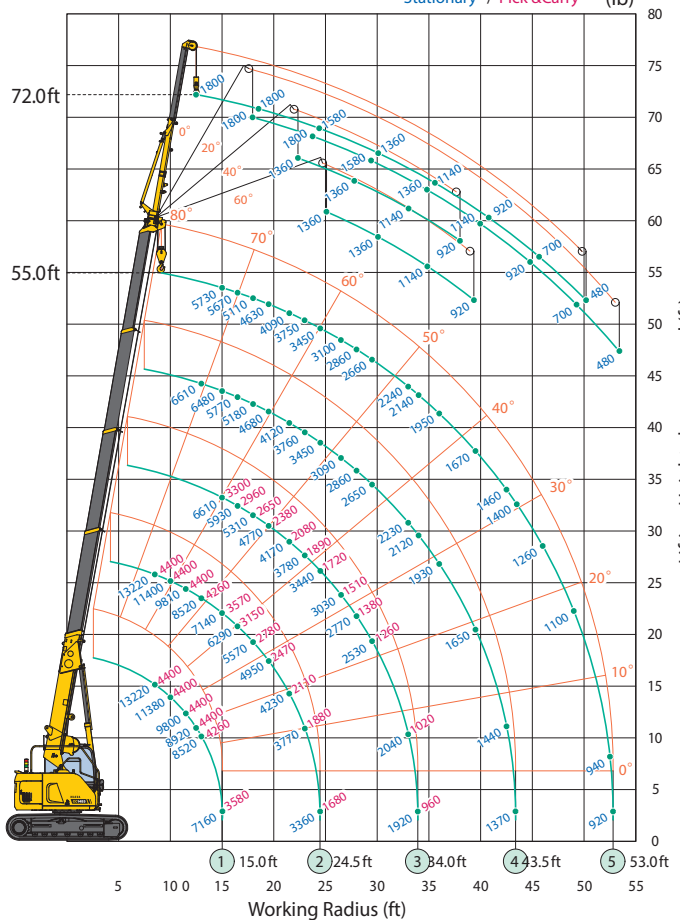
Dimensions



Rated Total Load Chart (4 Part Line)

Working radius (ft.)	15.6 Ft. Boom		15.7 - 25.0 Ft. Boom		25.1 - 34.5 Ft. Boom		34.6 - 43.9 Ft. Boom	44.0 - 53.4 Ft. Boom
	Stationary	Pick & Carry	Stationary	Pick & Carry	Stationary	Pick & Carry	Stationary	Stationary
6.5	13220	4400	13220	4400	6610	3300		
8.0	13220	4400	13220	4400	6610	3300	6610	
8.5	13220	4400	13220	4400	6610	3300	6610	
10.0	11380	4400	11400	4400	6610	3300	6610	5730
10.5	10810	4400	10830	4400	6610	3300	6610	5730
11.5	9800	4400	9810	4400	6610	3300	6610	5730
12.5	8920	4400	8920	4400	6610	3300	6610	5730
13.0	8520	4260	8520	4260	6610	3300	6610	5730
15.0	7160	3580	7140	3570	6610	3300	6480	5730
16.5			6290	3150	5930	2960	5770	5670
18.0			5570	2780	5310	2650	5180	5110
19.5			4950	2470	4770	2380	4680	4630
21.5			4230	2110	4170	2080	4120	4090
23.0			3770	1880	3780	1890	3760	3750
24.5			3360	1680	3440	1720	3450	3450
26.5					3030	1510	3090	3100
28.0					2770	1380	2860	2860
29.5					2530	1260	2650	2660
33.0					2040	1020	2230	2240
34.0					1920	960	2120	2140
36.0							1930	1950
39.5							1650	1670
42.5							1440	1460
43.5							1370	1400
46.0								1260
49.0								1100
52.5								940
53.0								920
Boom angle range (deg)	0 ~ 64.3		0 ~ 74.4		0 ~ 78.8		0 ~ 80.0	0 ~ 80.0

Working Range Chart (4Part)



- This chart lists the main boom tip capacities using 4-part line reeving on the hook block. When using 2-part reeving on the hook block the rated loads are limited to 6,600 lb. When reeved for 1-part line use, from the main boom tip, the rated loads are limited to 3,300 lb.
- Standard supplied hook block weight is 200 lb.
- Pick & carry duty is possible within boom length stages 1, 2 and 3. The pick & carry capacities are listed in RED following the stationary capacities (stationary / pick & carry). This chart is for sales reference only. Do not use this chart for lifting. Refer to the actual machine's total load chart and its notes for exact details.

Due to improvements, the specifications are subject to change without notice. ASME B 30.5 compliant

YELLO EQUIPMENT

MAEDA AUTHORISED DEALER

P: 409-770-3091 W: YELLOEQUIPMENT.COM

