

# SMHC35

## PRODUCT SPECIFICATIONS



SCAN  
QR CODE FOR  
PRODUCT INFO

**YELLO**<sup>TM</sup>  
EQUIPMENT

## STANDARD FEATURES

- Proven Reliability
- Wide Working Range
- High Efficiency
- Low Fuel Consumption
- Mitsubishi D06FRC-TAA
- Different Grabs Available to Suit Application
- Working Depth - -6.0m
- Kawasaki Hydraulic System

- ➔ Rated Power  
147 kW /2100 rpm
- ➔ Working Height  
up to 13m
- ➔ Overall Weight  
35,200 kg
- ➔ Gradeability  
40%

**YELLO EQUIPMENT**

SANY AUTHORISED DEALER

P: 1300 093 556 W: YELLOEQUIPMENT.COM

**YELLO**<sup>TM</sup>  
EQUIPMENT



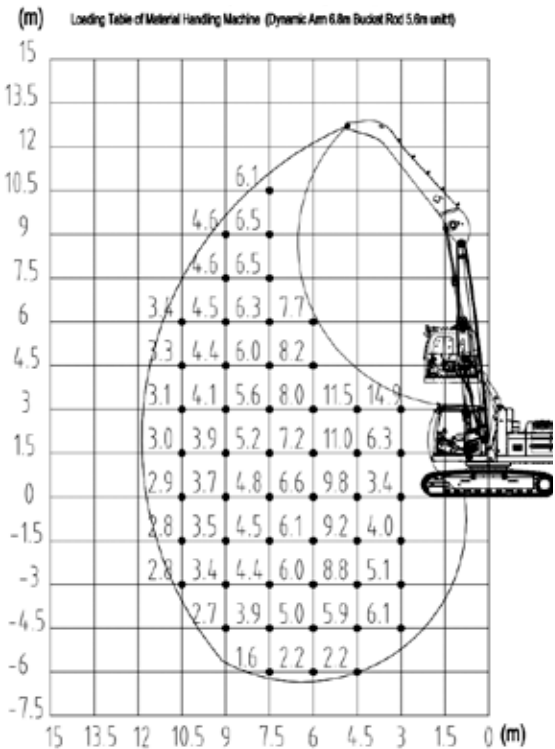
### Brief Introduction

Sany 35t Material Handling machine mainly apply to grab and loading or unloading operation for waste steel and bulk, with high efficiency, super high performance, safety and reliability.

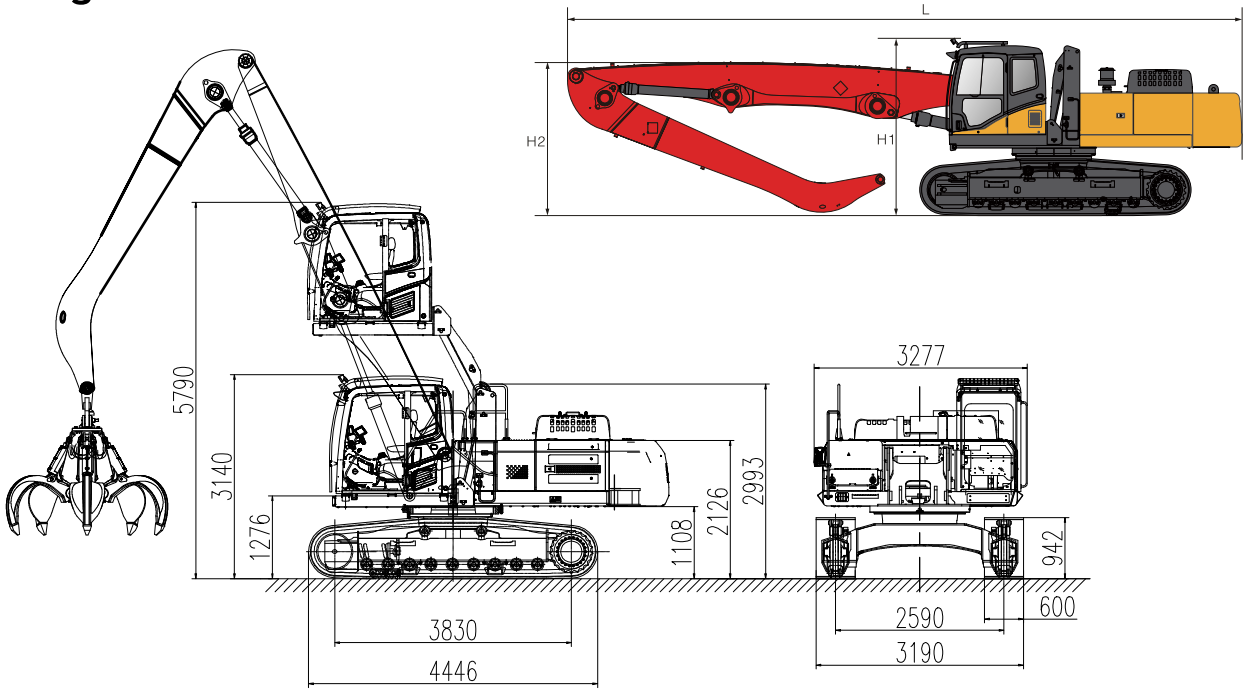
### CONFIGURATION PARAMETER

Power system	Engine		Mitsubishi D06FRC-TAA
		Maximum power	147kW/2100rpm
		Maximum torque	750Nm//1350rpm
		Emission	CHN III
		Oil tank	465L
Moving system	Working rail span		2590mm
	Tread width		3830mm
	Track width		600mm
	Maximum travel speed		5km/h
Hydraulic system	Control type		Electronic control positive flow system
	Main pump	Model	Kawasaki K7V125DTP1N9R-0E05-1V
		Rated flow	2X260L/min
	Main valve		Kawasaki KMX15RB/B45217A-V
	Reducer		Sauter GS14D20C.0
	Movable boom cylinder		Hengli JSY26.5-DB
	Stick cylinder		Zhongxing ZX200.3.1B
	Maximum system pressure		32MPa
	Hydraulic oil tank		230L
Slewing mechanism	Slewing bearing		Sauter SSF1405/40CWH II
	Maximum slewing speed		8rpm
Operation cabin	Lifting height		2650mm
Operation basic parameters	Boom specification		12m
			Maximum working radius
			Maximum working height
	Maximum working radius		10.5m
	Maximum working height		10.5m
	Maximum working depth		-6m
	Theoretical load on maximum radius point(including grab)		3.4t

Working range



The diagram of dimension



	The length of movable hinge point	The length of stick point	L	H1	H2
Boom combination(standard)	6.8m	5.6m	10.4m	3.14m	2.58m