



SCAN  
QR CODE FOR  
PRODUCT INFO

# GREAT PERFORMANCE CAN BE SO SMALL

PHENOMENALLY AGILE. PHENOMENALLY EFFICIENT.

CONSTRUCTION MACHINERY



## MINI EXCAVATORS **SY50U**

**SANY**

Quality Changes the World

Engine  
Yanmar 4TNV88-PSY  
Rated power  
29.1 kW / 2400 rpm  
Bucket capacity  
0.152 m<sup>3</sup>  
Operating mass  
5300 kg



# SANY

## For challenging tasks, you need a first-class partner

Quality comes from experience. And from new ideas. This is why we combine these two crucial factors at SANY. This is because we are one of the world's leading producers, having sold more than **170 000** excavators in **10 years**. This means that you can always rely on sophisticated products that have been tried and tested in practice. An impressive **5–7%** of our annual turnover is dedicated to research and development. This is why we give you not only our word, but also our extraordinary **five-year warranty** as a guarantee of how powerful and robust our products are.

**170 000**  
EXCAVATORS SOLD IN  
**10 YEARS**

**5–7%**  
TURNOVER FOR RESEARCH  
AND DEVELOPMENT

**FIVE-YEAR  
WARRANTY\***

Quality Changes the World

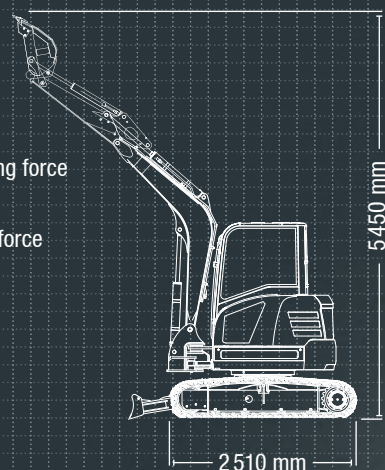
### SY50U HARD FACTS

Max. bucket digging force  
32.5 kN (ISO)

Max. arm digging force  
22.9 kN (ISO)

Swingspeed  
10 rpm

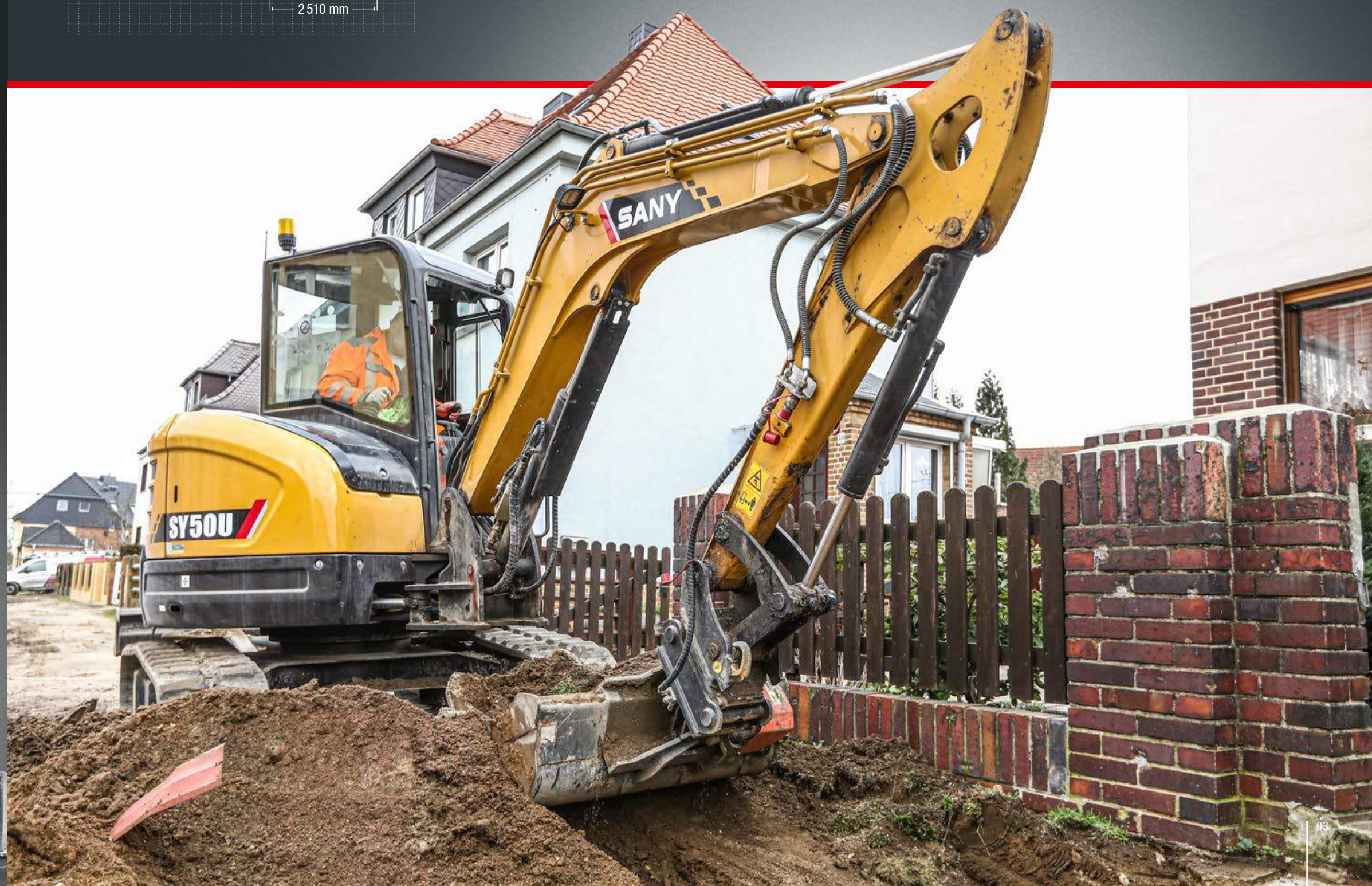
Max. travel speed  
4 km/h



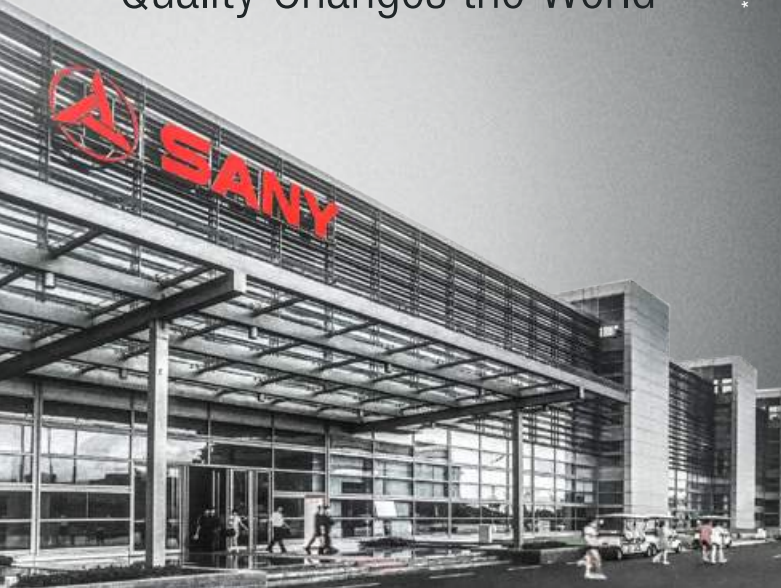
## LIGHT WEIGHT, HEAVY DUTY

With the SY50U short-tail-swing excavator, you have a specialist at your side that can prove its power especially in confined spaces. It requires little space, so can work and manoeuvre everywhere where conventional machines reach their limits – in places that are difficult to access, directly next to walls and house walls, on construction sites

in busy inner-city areas or on busy roads. You can rely on its responsive, precise control and on the fact that this small machine is ranked at the level of significantly larger machines in its class in terms of speed and power.



\* Applicable in certain markets, please check with your local dealer.





## ECONOMY

# OPERATING COSTS DOWN, PRODUCTIVITY UP

The SY50U is equipped with a particularly effective load-sensing hydraulic system. The piston pumps with a variable flow rate ensure sufficient power to carry out all operations smoothly and safely. The well-balanced combination of speed, power and precise response behaviour guarantees high cost-effectiveness with fuel in every phase: The hydraulic pump always delivers just enough oil as is actually needed.



## QUALITY

**Robust and durable** – Especially precise, robot-manufactured welded seams guarantee a long service life under the harshest conditions.

## DIMENSIONS

**In the smallest of spaces** – The short-tail-swing machine's compact dimensions enable it to manoeuvre masterfully even in the smallest areas of the construction site. This mobility broadens its possible applications and increases productivity.

## USER EXPERIENCE

**Maintenance and service** – The engine bonnet is very easy to open with help from the gas pressure dampers. At the back, the key components for maintenance and service are clearly arranged in the centre. This saves time on routine tasks.



## SAFETY

**No compromises** – Extensive safety equipment is standard, from rotating warning beacons to lockable protective bonnets and battery disconnection switches.

## COMPONENTS

**Power** – The tried-and-tested Yanmar 4TNV88 PSY engine guarantees reliable performance for all tasks, even in harsh working conditions.

## ECONOMY

**Cost-effectiveness as standard** – The smart control system adapts the pump capacity to the available engine power for greater efficiency and reduced fuel consumption.

## Absolute reliability – for peace of mind!

SANY's five-year warranty\* gives you the assurance that you can fully count on your equipment.



\* With participating partners

## ECONOMY

## Less is more

Quality that pays for itself in the long term: Low maintenance requirements and long intervals between maintenance. Additionally, all important maintenance points are very easily accessible. This saves on operating costs and increases cost-effectiveness.



## QUALITY

## Metal panels

Durability and robustness are standard features on all SANY excavators. For example, the panels are made solely of metal. This makes them particularly robust – and if an accident happens during the tough everyday work on a construction site, it can usually be straightened out again quickly.





USER EXPERIENCE

# A FOCUS ON THE OPERATOR

The productivity of an excavator is largely dependent on whether the driver can work for long periods in a focused manner. This is why the SY50U is fitted with a particularly roomy driver's cab with the highest level of comfort. The operator can sit comfortably in the ergonomic driver's seat. The height of the armrests can be adapted for fatigue-free working. Despite the compact design, there is also enough room in the footwell – if required, the pedals can be folded away to create more space. The driver has the best possible view of everything from the cab. The quiet-running engine, together with the sound- and vibration-damping design, minimises noise and vibrations.



Our highlights – the added benefits SANY offers you:

- + Short-tail-swing machine with compact dimensions
- + 2 proportional auxiliary control circuit via joystick operation as standard
- + Efficient, powerful load-sensing hydraulic system
- + Clear instruments and a large, high-resolution colour display
- + Automatic speed setting
- + Air conditioning system
- + ROPS and FOPS-certified driver's cab for safety in operation



COMPONENTS

# MORE LIGHT, MORE VISIBILITY, MORE SAFETY

With the SY50U, you can always see what you're working on, even in poor visibility. The powerful LED light's guarantee that the work area is optimally illuminated. Their energy usage is pleasingly low, ensuring that the battery has a long service life. Furthermore, the headlights require almost no maintenance, which saves time and repair costs.



USER EXPERIENCE

## For a full view

You have everything in view with the large, central display, which shows all important data and values clearly and well arranged. In addition to the basic information, gear selection or attachment device can also be set here. The next planned maintenance is also stored in the menu.

USER EXPERIENCE

## Easy-maintenance concept

Machines that are quick and easy to maintain save time and money day-to-day on the construction site. The SANY SY50U provides easy access to all points necessary for checking and maintenance work straight from the ground. This means that planned maintenance can be carried out quickly from groundlevel, which increases the machine's availability and service life and ensures that both the operators and the equipment are reliably protected in the long term.



DIMENSIONS

## Quick look round the back

Excavation operations next to obstacles? No problem for the SANY SY50U. With the compact short-tail-swing excavator, you can enjoy the highest degree of manoeuvrability, as well as unlimited rotation.



SAFETY

## Optimum panoramic view

The large windows and sophisticated cab design ensure that the driver has the best possible view of the area around the vehicle. The 360° panoramic view allows exceptional safety levels in the working area.



ENGINE

Model	Yanmar 4TNV88-PSY
Typ	Water-cooled, 4 cylinder, with commonrail and DPF
Exhaust emissions	Stage V
Rated power	29.1 kW / 2400 rpm
Max. torque	144.9 Nm / 1 500 rpm
Displacement	2 191 ccm
Batteries	1 × 12 V / 80 Ah

HYDRAULIC SYSTEM

Mainpump	1 x variable-piston-pump with loadsensing control
Max. oilflow	110 l/min
Travelmotor	2 speed axial piston motor with planetary reducer and automatic multi-disc brake
Swingmotor	Axial piston motor with planetary reducer and automatic holding brake

SERVICE REFILL CAPACITIES

Fuel tank	78 l
Engine coolant	4.2 l
Engine oil	7.4 l
Drive (per side)	0.9 l
Hydraulicsystem	80 l
Hydraulic oil tank	52 l

PERFORMANCE

Swingspeed	10 rpm
Max. travel speed	High 4 km/h, slow 2.7 km/h
Max. travel force	40.7 kN
Gradeability	30°
Bucket capacity	0.152 m³
Groundpressure	0.32 kg/cm²
Bucket digging force ISO	32.5 kN
Arm digging force ISO	22.9 kN

OPERATING MASS

SY50U	5 300 kg
-------	----------


UNDER AND UPPER STRUCTURE

Boom length	2 700 mm
Arm length	1 500 mm
Bottomrollers	1
Toprollers	4
Rotation device	Planetary gear reducer driven by an axial piston motor, automatic hydraulic released slewing brake


RELIEF VALVE SETTINGS

Implement circuit	245 bar
Swing circuit	191 bar
Travle circuit	245 bar
Pilot pressure	35 bar

LIFTING CAPACITIES OF LOWER DOZER BLADE

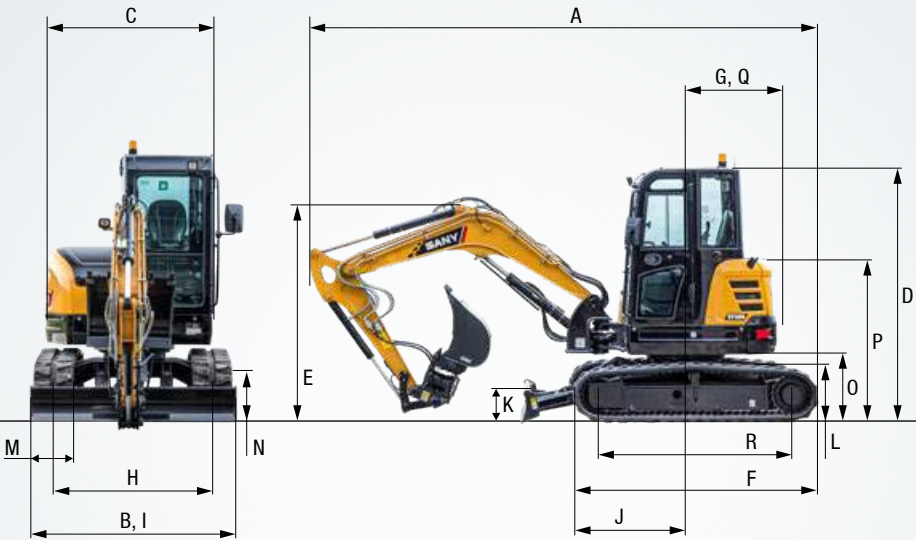
 Load point height	Radius					Digging reach
	2.0 m / 6.6 ft	3.0 m / 9.8 ft	4.0 m / 13.1 ft	5.0 m / 16.4 ft	Maximal	
4.0 m kg						1 085 845
13.1 ft lb						2 387 1 859
3.0 m kg			1 050 815			1 050 655
9.8 ft lb			2 310 1 793			2 310 1 441
2.0 m kg	1 545 1 190 1 190 790					1 055 580
6.6 ft lb	3 399 2 618 2 618 1 738					2 321 1 276
1.0 m kg	2 020 1 110 1 365 760 1 080 560					1 075 555
3.3 ft lb	4 444 2 442 3 003 1 672 2 376 1 232					2 365 1 221
Ground kg	2 165 1 075 1 445 735					1 100 575
line lb	4 763 2 365 3 179 1 617					2 420 1 265
-1.0 m kg	2 735 2 000 1 975 1 075 1 325 735					1 110 655
-3.3 ft lb	6 017 4 400 4 345 2 365 2 915 1 617					2 442 1 441
-2.0 m kg	2 135 2 050 1 370 1 100					1 040 905
-6.6 ft lb	4 697 4 510 3 014 2 420					2 288 1 991

LIFTING CAPACITIES OF UPPER DOZER BLADE

 Load point height	Radius					Digging reach
	2.0 m / 6.6 ft	3.0 m / 9.8 ft	4.0 m / 13.1 ft	5.0 m / 16.4 ft	Maximal	
4.0 m kg						1 025 845
13.1 ft lb						2 255 1 859
3.0 m kg			985 815			790 655
9.8 ft lb			2 167 1 793			1 738 1 441
2.0 m kg	1 485 1 190 960 790					700 580
6.6 ft lb	3 267 2 618 2 112 1 738					1 540 1 276
1.0 m kg	1 400 1 110 925 760 680 560					675 555
3.3 ft lb	3 080 2 442 2 035 1 672 1 496 1 232					1 485 1 221
Ground kg	1 360 1 075 905 735					700 575
line lb	2 992 2 365 1 991 1 617					1 540 1 265
-1.0 m kg	2 735 2 000 1 355 1 075 900 735					800 655
-3.3 ft lb	6 017 4 400 2 981 2 365 1 980 1 617					1 760 1 441
-2.0 m kg	2 135 2 050 1 370 1 100					1 040 905
-6.6 ft lb	4 697 4 510 3 014 2 420					2 288 1 991

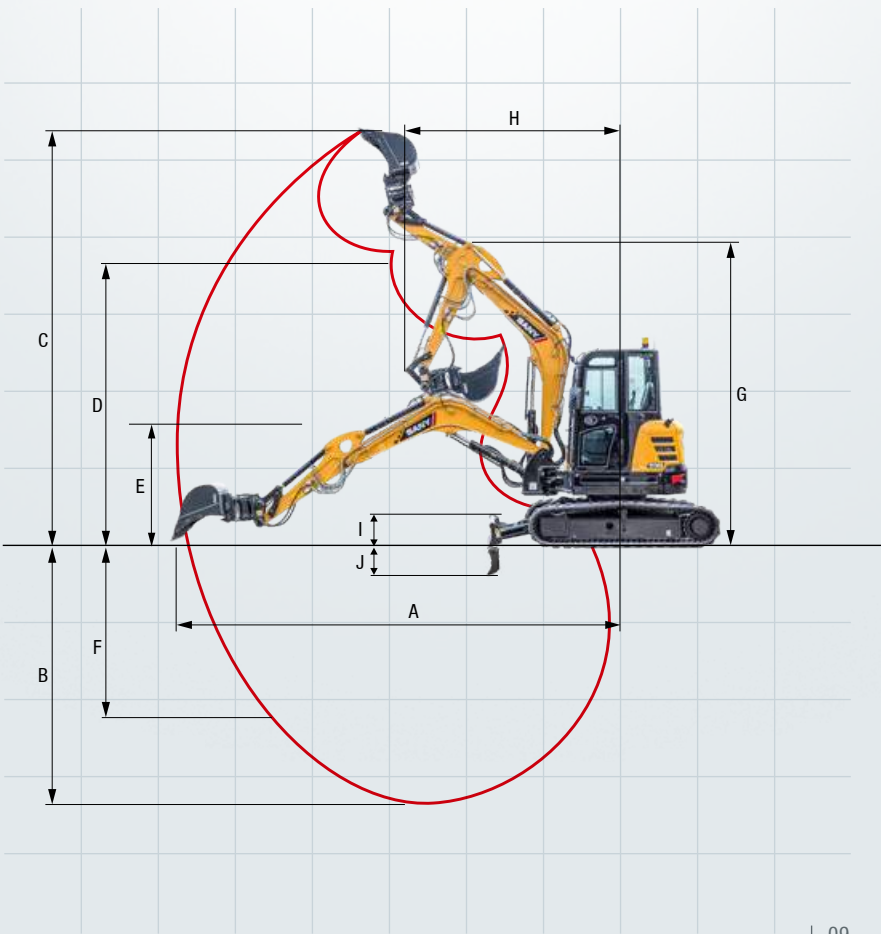
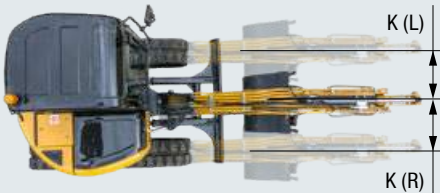
DIMENSIONS (TRANSPORT)

A Transport length	5 390 mm
B Transport width	1 960 mm
C Upperstructure carriage	1 760 mm
D Height over cabin/ROPS	2 630 mm
E Height of Boom – transport	2 060 mm
F Overall length of crawler	2 510 mm
G Tail length	980 mm
H Track gauge	1 560 mm
I Undercarriage width (blade)	1 960 mm
J Horizontal distance to blade	1 790 mm
K Blade height	340 mm
L Track height	610 mm
M Track pads width	400 mm
N Min. ground clearance	325 mm
O Counterweigh clearance	675 mm
P Engine cover height	1 660 mm
Q Tail swing radius	980 mm
R Center distance of tumblers	1 970 mm



WORKING AREA

A Max. digging reach	5 880 mm
B Max. digging depth	3 420 mm
C Max. digging height	5 450 mm
D Max. dumping height	4 155 mm
E Min. dumping height	1 410 mm
F Max. vertical digging depth	2 460 mm
G Overall height over arm by min. swing radius	4 155 mm
H Swing radius by max. boomswing (L)	2 260 mm
Swing radius by max. boomswing (R)	2 080 mm
Min. swing radius	2 520 mm
I Max. clearance when blade up	420 mm
J Max. depth of blade down	405 mm
K Offset boom (L)	745 mm
Offset boom (R)	710 mm
Max. boom-swing angle (L)	58°
Max. boom-swing angle (R)	54°



The SY50U – great results and great equipment

The SY50U ex-works is an all-rounder and perfectly equipped for a range of applications. Optional extra equipment and attachment devices are available to increase its flexibility even more.



OPERATORS COMFORT / CABIN

Heater	●
Manual air condition system	●
Radio and speaker	●
Armrests (adjustable)	●
12v outlets	●
Wiper	●
Sprayer f. wiper	●
AUX 1 on Joystick	●
AUX 2 on Joystick	●
8 stored hydraulic settings for attachments	●
Removable front-window	●

SAFETY

Battery master switch	●
Travel Alarm	●
Warning beacon	●
Lockable hoods	●

WORKING EQUIPMENT

Boom and arm load holding valves with overload indicator	●
Double acting circuit for hydraulic quick coupler with piping	●
Breaker&Shear line proportional on Joystick with piping	●
Rotation line proportional on Joystick with piping	●
Flow adjustment for attachments	●
Dozer blade	●
Cylinder guardes – boom	●

Standard equipment ● Special option ●

The standard and special options differ depending on the country in which the mini excavator is delivered. If you have any questions, please contact your dealer directly.

WORKING LIGHTS

Lights – front (LED)	●
Lights – boom (LED)	●

UNDERCARRIAGE

Rubber tracks	●
Steel tracks	●
Holes/loops for fixing	●
Safety valves on blade cylinder	●

ENGINE

Auto idle	●
Diesel filter	●
DPF	●
Airfilter	●

HYDRAULIC SYSTEM

Swing brake	●
2 speed travel	●
Hydr. Pre-pressure operating joysticks	●
Piping for additional hydraulic function AUX 1	●
Piping for additional hydraulic function AUX 2	●
Mainfilter	●

A SERVICE YOU CAN RELY ON

Just as we do with our excavators, we also demand high quality and reliability of our service products. This underlines our equipment's performance in terms of their durability and their excellent price-performance ratio. After all, maintenance is crucial

for efficiency, cost-effectiveness and safety. Your SANY dealer is happy to help you with a comprehensive range of services to ensure that your machine continues operating efficiently in the long term.

SANY – flexible, fast and always there for you

Rapid assistance, tailored advice and a reliable supply of original parts – that is what we mean by a premium service.



NSW



The added benefits SANY offers you:

- + Fast supply due to central located parts warehouses
- + More than 15,000 spare parts to make your machine highly reliable
- + Expert knowledge for optimal supply for your machine
- + Thanks to SANY's special training programme, our dealers are always kept up-to-date so that they can face all technical challenges.

Parts supply – quick and reliable

With the purchase of a SANY mini excavator you have made an investment in the future. Fast availability of spare parts is your guarantee of minimal downtimes and failure times.

Detailed information in black and white

Handbooks and documents are available for all SANY mini excavators, and these can help you with operation, maintenance, servicing and repairs. These include operating and maintenance instructions and technical specifications.





# PERFECT COMBINATION OF COMPACTNESS + AND POWER

The SANY SY50U really is a powerful little machine. Its compact design means it is at home on urban construction sites, as well as anywhere with areas that are particularly small. Its power and versatility therefore ensure productivity.

## ROBUST AND DURABLE

All components are designed to withstand high stress. The workmanship of the materials is also especially **high-quality** – almost all the **welded seams are perfectly executed by welding robots**.

## IN THE SMALLEST OF SPACES

The **robust swivel bracket** is the most important aspect for all tasks. It enables the machine to achieve its exceptionally **compact mobility**.

## MAINTENANCE AND SERVICE

Thanks to the engine bonnet supported by **gas pressure dampers** and the central, **clear arrangement of the key components**, usual routine checks and work on the machine can be carried out quickly and easily.

## NO COMPROMISES

Daily operations on the construction site make high demands on both operators and machines. **Excellent safety components** are therefore always included, such as the **stable cylinder covers**.

## POWER

The **powerful Yanmar 4TNV88 PSY engine** means that this mini excavator is also perfectly suited to „maxi“ tasks.

## COST-EFFECTIVENESS AS STANDARD

In conjunction with the **electronic fuel injection**, the **autothrottle function** adjusts the engine speed to the power required. This means that the **smart hydraulic system reduces the fuel consumption, engine wear and exhaust emissions**. This is positively reflected in its cost-effectiveness and **low life cycle costs**.

## TECHNICAL HIGHLIGHTS

Engine	Yanmar 4TNV88-PSY
Rated power	29.1 kW / 2 400 rpm
Max. torque	144.9 Nm / 1 500 rpm
Max. travel speed	4 km/h
Swingspeed	10 rpm
Mainpump	1 x variable-piston-pump with loadsensing control
Max. oilflow	110 l/min

Not all products are available in all markets. As part of our continuous improvement process, we reserve the right to modify specifications and designs without giving prior notice. The figures may contain additional options.

**YELLO EQUIPMENT**

**SANY AUTHORISED DEALER**

P: 1300 093 556

W: YELLOEQUIPMENT.COM

**YELLO<sup>TM</sup>**  
EQUIPMENT