



- ◆ Cummins engine of QSC 8.3, 260HP in T3, 8.3L displacement with 1135N.M maximum torque and 35% torque rise, the australia's mainstream choice.
- ◆ Direct drive transmission, it's a muscular machine with rapidly response power transmission and high efficiency, mature application in the north american market, so good to meet load fluctuation conditions of and in line with the australian market demands.
- ◆ Three air filters, three oil filters and four throttles makes more full combustion, intake and scavenging more thorough.

Safety first

- ◆ FOPS/ROPS certified mining cab.
- ◆ Starter isolator, seat belt indicator, seat sensor, implements lock and other redundant conditions to prevent false start and false action to protect personal safety.
- ◆ Emergency stop buttons of in-cab and out-cab, emergency steering system of front wheels, wheel chocks, backup camera, ladder lights, troubles self-diagnosis, etc., Escort the safety of operators and machine.
- ◆ The pressurization system meet the CE and AIOH same time , effective filtration of harmful gases, asbestos/ quartz dust, oil particles, dust, etc., to ensure operator safety and avoid pneumoconiosis hazards.

SMG260 Grader Technical Specifications

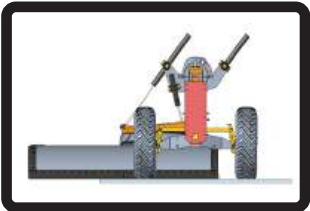
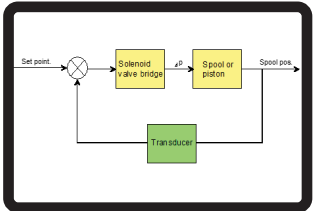
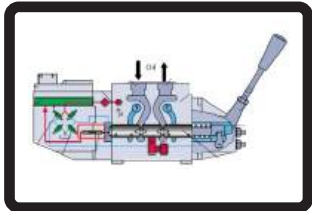
Module		SMG260
Engine	Engine model	Cummins QSC 8.3 (T3)
	VHP	194 kW
	Displacement	8.3 L
	Speed @ rated power	2200 rpm
	Maximum torque	1135 N·m
	Torque rise	35%
	Fuel tank	400L
Power Train	Forward / reverse gears	8 forward / 6 reverse
	Transmission	Direct drive, Power shift
	Brakes - parking	Hydraulically actuated, multiple oil-disc
	Maximum speed – forward/reverse	49.6 / 39.1 km/h
	Turning radius, outside front tires	7.55 m
	Steering range – left/right	41.0 Degrees
	Articulation angle – left/right	24.5 Degrees
Structures	Front axle - total oscillation	32 Degrees
	Circle - diameter	1520 mm
	Front axle - height to center	645 mm
	Front axle - wheel lean, left/right	26 Degrees
	Tandem width	215 mm
	Tandem oscillation – front up / down	15 / 25 Degrees
Operating weight	No attachments	17910kg
	Scarifier and front counter weight	20100kg
Hydraulic system	Circuit type	Load sensing, proportional priority pressure compensating system
	Maximum implements system pressure	25 Mpa
	Implements system Standby pressure	3.2 Mpa
	Implements pump output	231 L/min
	Maximum fan system pressure	21 Mpa
	Fan motor / maximum rotate speed	Gear motor / 1850 rpm
Blade	Hydraulic tank capacity	140 L
	Blade width	4270 mm
	Moldboard - height	610 mm
	Moldboard - thickness	22 mm
	Throat clearance	120 mm
	Moldboard sideshift – right / left	662 mm / 630 mm
	Maximum blade position angle	90 Degrees
	Blade tip range	43 Degrees
	Maximum shoulder reach outside of tires – right / left	2070 mm / 2118 mm
	Maximum lift above ground	488 mm
Dimension	Maximum depth of cut	1236 mm
	No attachments	9315mm×2731mm×3508mm
	Scarifier and front counter weight	10677mm×2731mm×3508mm

SMG260 Grader Standard & Optional Configurations

	Standard	Optional
Air cleaner	Vortex	Oil bath
Mouldboard	14ft(4270mm)	12ft(3660mm)
Blade thickness	19mm	25mm 25mm+wear rib
Others	FOPS/ROPS hexahedron cab Cab pressurization Blade buffering Blade adjustment float Emergency steering Dual joysticks Intelligent and reverse fan Backup camera Ground emergency stop Seat sensor and belt indicator Openable tail cover Transmission protect cover Front counter weight Rear scarifier Wheel chocks Air suspension seat 17.5-25 vacuum tire	Auto lubrication Front dozer All wheel drive Outside mirror heated Blade 2D/3D leveling system Auto lubrication system Cab front windshield protector

5 High working efficiency

- ◆ CAN valve equipped with spool displacement sensor, the closed circuit system compensates the impact of flow and pressure, changes of temperature and viscosity, voltage changes and changes of output flow by other factors, and ensures that the joysticks and blade realize the linear control to achieve fast, accurate and stable control of blade and reach the blade wherever you want.
- ◆ CAN-bus closed circuit control of electric proportional multiway valve and joysticks equipped with load sensitive hydraulic system to achieve 99.5% control accuracy of joystick-blade, high efficiency on construction.
- ◆ The left side of the blade can cover 2.12m, the right side can cover 2.1m, and the working range of the blade is more larger.
- ◆ For the high temperature environment in Australia, the optimized coolant power distribution of the radiator and the intelligent fan of the cabin partition can dissipate the heat accurately, more economy.



YELLO EQUIPMENT

SANY AUTHORISED DEALER

P: 1300 093 556 W: YELLOEQUIPMENT.COM