



SANY ST230V TRACKED LOADER

- **Rated Power**
53.7 kW / 73 hp
- **Operating Weight**
4680 kg / 10318 lb
- **High Flow**
120 L/min / 31.6 gpm
- **Rated Operating Capacity**
1100 kg / 2430 lb

KEY FEATURES

● Comfortable ride

Spacious and well-sealed cab with noise levels low. Upward-opening door for convenient access.

● Intelligent operation

Stable driving and automatic leveling systems with hydraulic pilot control and DA power distribution technology for precise movements.

● Efficient performance

Vertical lift structure with high unloading height, dual-speed configuration, and quick transition speed for fast and efficient work.

● Versatile use

Standard and high-flow output options with various attachments available, such as buckets, sweepers, snow removers, millers, and augers, to meet different job requirements.

PERFORMANCE PARAMETERS

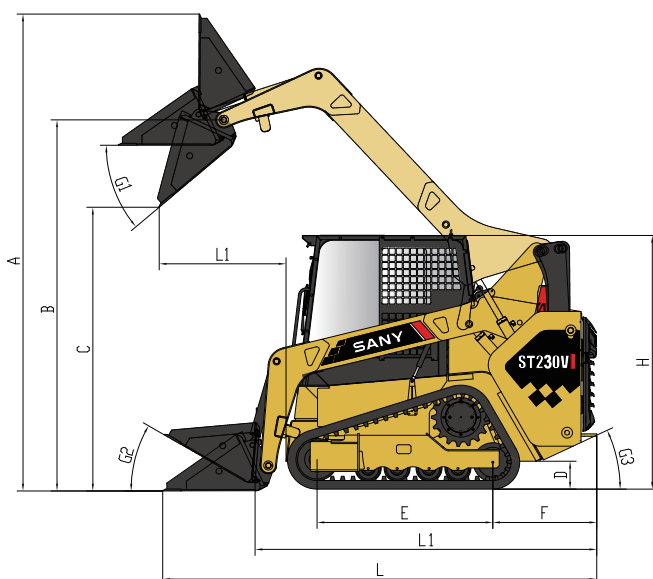
ST230V

Engine Model	Yanmar 4TNV98CT
Engine Speed	2400 rpm
Rated Power	53.7 kW / 73 hp
Peak Torque	280 N.m / 206 lbf-ft at 1560 rpm
Displacement	3.319 L / 203 in ³
Aspiration	Turbo-charger
Emissions	Tier 4 Final
Cycle Time (Raise/Lower/Dump)	9.0 s
Loader Hydraulic Pressure	23 MPa / 3336 psi
Battery Voltage	12 V
Diesel Tank	100 L / 26.4 gal

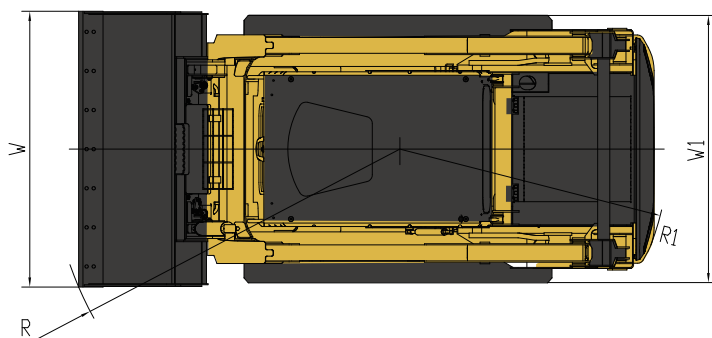
Rated Operating Capacity	1100 kg / 2430 lbs
Tipping Load	3148 kg / 6943 lbs
Operating Weight	4680 kg / 10318 lbs
Breakout Force, Tilt Cylinder	25.5 kN / 5733 lbf
One Speed	8.0 km/h / 5.0 mph
Two Speed	13.2 km/h / 8.0 mph
Rubber Track Size	320x86-52
Standard Flow	80 L/min / 21 gpm
High Flow	120 L/min / 31.6 gpm
Lift Geometry	Vertical Lift
Cab	FOPS & ROPS

OVERALL MACHINE SIZE

ST230V



A Maximum Overall Height	3965 mm / 156 in
B Bucket Pin Height at Maximum Lift	3060 mm / 120.5 in
C Clearance at Maximum Lift and Dump	2340 mm / 92 in
D Ground Clearance	230 mm / 9 in
E Track Length On Ground	1460 mm / 57.5 in
F Bumper Overhang behind Rear Axle	883 mm / 34.8 in
G1 Maximum Dump Angle	40 °
G2 Rollback Angle of Bucket on Ground	30 °
G3 Departure Angle	28 °
H Height to Top of Cab	2100 mm / 82.7 in
L Length with Bucket on Ground	3610 mm / 142 in
L1 Reach at Maximum Lift and Dump	1065 mm / 42 in
L2 Length without Bucket	2885 mm / 113.6 in
R Turning Radius from Center-Bucket	2100 mm / 82.7 in
R1 Turning Radius from Center-Machine Rear	1685 mm / 66.3 in
W Width with Bucket	1727 mm / 68 in
W1 Width without Bucket	1675 mm / 66 in



MP@C'9ei Jda Ybh™

G5BM5I H<CF -G98'895@9F

P:1300 093 556

W:yellowequipment.com/au

SANY