



SANY SS270V SKID STEER LOADER

KEY FEATURES

● Ride Comfortable

Adapted the integral cab , large space , good tightness, noise as low as 77dB(A) , upturn door design which can operate the machine opened.

● Work efficiency

vertical lifting structure , high unloading height , dual speed, faster transfer.

● Control Intelligent

Driving stability system and automatic leveling system ensure stable action, To achieve precise control of action by using hydraulic pilot control and DA power distribution technology.

● Widely used

Standard flow and high flow output , can be configured with bucket, cleaning, snow removal, milling, auger and other accessories, to meet the needs of different working conditions.

PERFORMANCE PARAMETERS

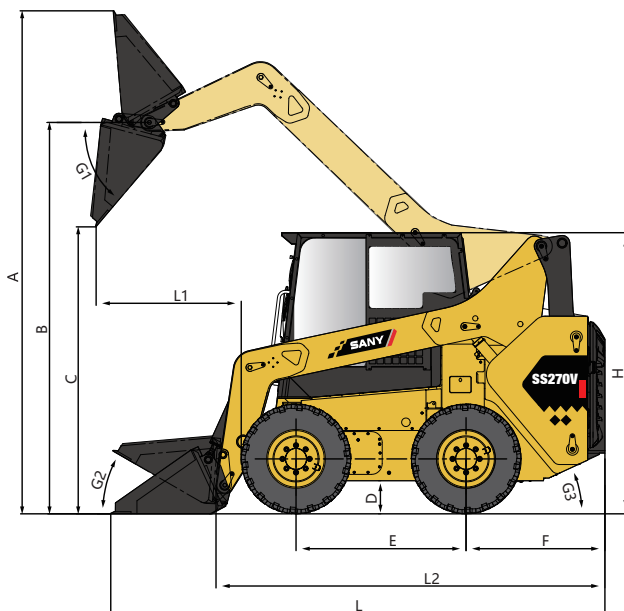
SS270V

Engine Model	Yanmar 4TNV98CT	
Engine Speed	2400 rpm	
Rated Power	53.7 kW	73 hp
Peak Torque	280 N.m	206 lbf-ft at 1560 rpm
Displacement	3.319 L	203 in ³
Aspiration	Turbo-charger	
Emissions	Tier 4 Final	
Three Items and time	9.3 s	
Loader Hydraulic Pressure	230 bar	3336 psi
Battery Voltage	12 V	
Diesel Tank	100 L	26.4 gal

Rated Operating Capacity	1290 kg	2850 lb
Tipping Load	2580 kg	5700 lb
Operating Weight	4250 kg	9370 lb
Breakout Force, Tilt Cylinder	28.8 kN	6670 lb
Lift Geometry	Vertical Lift	
One Speed	11.1 km/h	6.9 mph
Two Speed	20 km/h	12.4 mph
Tire Size	12-16.5 14PR	
Standard Flow	90L/min	23.8 gpm
High Flow	125L/min	33 gpm
Cab	FOPS & ROPS	

OVERALL MACHINE SIZE

SS270V



A Maximum Overall Height	4200	165.5 in
B Bucket Pin Height at Maximum Lift	3350	132 in
C Clearance at Maximum Lift and Dump	2620	103.2 in
L1 Reach at Maximum Lift and Dump	985	38.8 in
D Ground Clearance	228	9 in
E Wheelbase	1300	51.2 in
F Bumper Overhang behind Rear Axle	1050	41.4 in
R Turning Radius from Center-Bucket	2230	87.9 in
R1 Turning Radius from Center-Coupler	1352	53.3 in
R2 Turning Radius from Center-Machine Rear	1733	68.3 in
G1 Maximum Dump Angle	43 °	
G2 Rollback Angle of Bucket on Ground	30 °	
G3 Departure Angle	25 °	
L2 Length without Bucket	2991	117.8 in
L Length with Bucket on Ground	3756	148 in
W1 Tread Over Gauge with Spec Tires	1485	58.5 in
W2 Width without Bucket	1820	71.7 in
W Width with Bucket	1880	74.1 in
H Height to Top of Cab	2100	82.7 in

