

YELLOTM
EQUIPMENT

SANY



SCAN
QR CODE FOR
PRODUCT INFO

IMPRESSIVELY EFFICIENT

HIGH PERFORMANCE. LOW CONSUMPTION.

CONSTRUCTION MACHINERY



CRAWLER EXCAVATOR
SY365H

Engine
ISUZU GH-6HK1XKSC
Rated power
212 kW / 2 000 rpm
Operating mass
36 000 kg

SANY

For challenging tasks, you need a first-class partner

Quality comes from experience. And from new ideas. This is why we combine these two crucial factors at SANY. This is because we are one of the leading producers, having sold more than **450 000** excavators **worldwide**. This means that you can always rely on sophisticated products that have been tried and tested in practice. An impressive **5–7%** of our annual turnover is dedicated to research and development. This is why we give you not only our word, but also our extraordinary **four-year warranty** as a guarantee of how powerful and robust our products are.

450 000

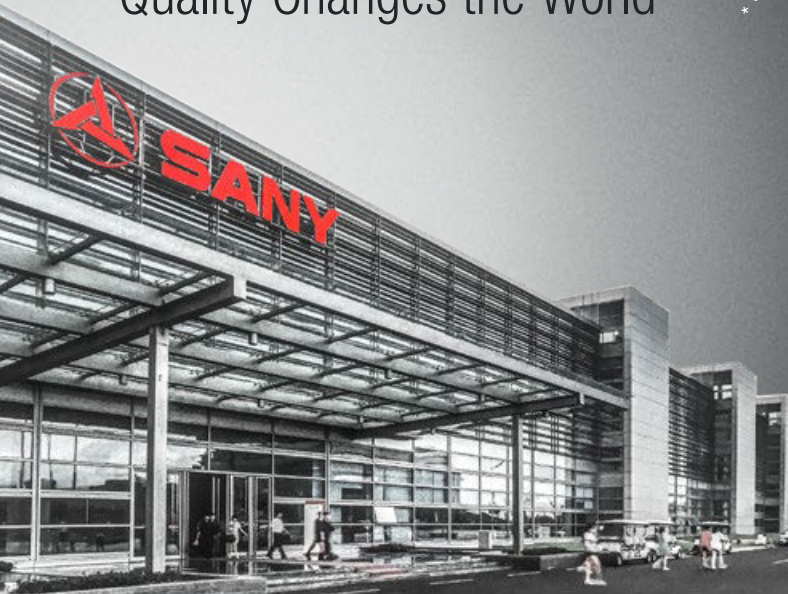
EXCAVATORS SOLD
WORLDWIDE

5–7%

TURNOVER FOR RESEARCH
AND DEVELOPMENT

FOUR-YEAR WARRANTY*

Quality Changes the World



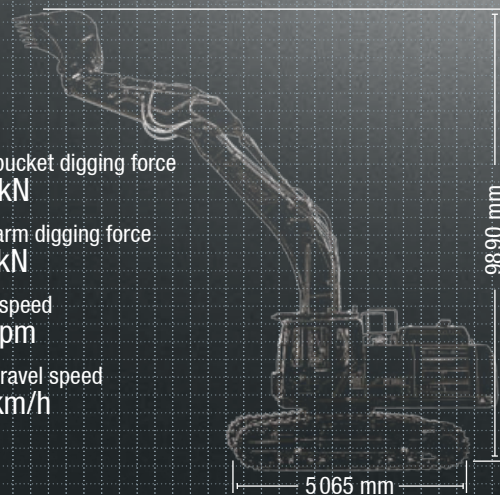
SY365H HARD FACTS

Max. bucket digging force
235 kN

Max. arm digging force
180 kN

Swingspeed
9.5 rpm

Max. travel speed
5.5 km/h



* Applicable in certain markets, please check with your local dealer.



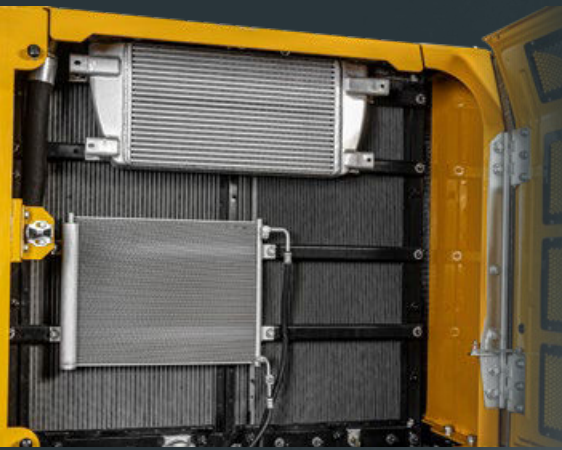
SY365H

A NEW DIMENSION IN PRODUCTIVITY

Whether its in civil engineering, demolition work or extraction – the SANY SY365H stands out as a sturdy all-rounder for heavy-duty applications in terms of performance, quality and robustness. In production, new technologies meet solid craftsmanship – and high-quality materials meet precise manufacturing methods. The result? Machines that offer you lasting and reliable productivity. And all this with an impressive price/performance ratio.



TOP PROPERTIES



COMPONENTS

SMART VENTILATION

To ensure that the engine does not overheat, even at maximum output, the SY365H is equipped with a powerful, electronically controlled fan. An integrated coupling ensures that the fan only starts to run when it is actually needed. This saves fuel, decreases noise levels and reduces emissions. Only main components from well-known brand manufacturers are used; for example, the tried and tested Kawasaki hydraulic system.

QUALITY

Always reliable – Optimum weight distribution was developed for the arm and boom, enabling maximum lifting capacity. New, high-strength cast parts at the points of most stress on the equipment reduce load stress and improve durability.

USER EXPERIENCE

So comfortable, so productive – The spacious cab is equipped with a comfortable, fully adjustable seat and adjustable consoles. This, along with some other features, such as the 10" touch display, makes the SY365H a comfortable work space.

DIMENSIONS

Stable base – The heavy-duty undercarriage provides stability in any situation. It is equipped with a triple chain guard and double-bearing of the top rollers as standard. Ideal conditions, then, for maximum service life, even with constant, heavy-duty use.



SAFETY

Looking good – The SY365H has a camera installed at the rear to provide the driver with a comprehensive view of the working environment. The images from the camera are shown on the HD display. The flat bonnet also allows a clear view to the rear.

COMPONENTS

High degree of efficiency – The powerful ISUZU unit, in combination with the corresponding exhaust treatment, guarantees full performance for every task. The drive without exhaust gas recirculation ensures efficient combustion.

ECONOMY

Maximum productivity – Select the optimum operating mode according to the specific application, and choose between high performance or minimum fuel consumption. The incredible productivity is also a result of its high level of flexibility. For this reason, the SY365H is equipped with two auxiliary control circuits as standard.

DIMENSIONS

Stable in every situation

Anyone who wants to really tackle the tough everyday conditions of the construction site needs excellent stability. With the SY365H, the sturdy HD undercarriage is the perfect base. With its low centre of gravity and sophisticated balance, it can make full use of its impressive capacity. A triple chain guard and two stem shoes as standard equipment complete the robust undercarriage design.



SAFETY

SAFETY DOWN TO THE TINIEST DETAIL

A rear camera is installed ex works as standard. The image is displayed on the HD monitor, and provide an accurate image of the environment to ensure the highest level of safety. In poor lighting conditions, six work spotlights provide excellent illumination. The maintenance-free LED lights stand out thanks to their exceptional illumination and low power consumption thereby saving the battery. Sturdy loops for secure transport and a maintenance platform with non-skid surface and a non-slip rail are included in the standard equipment along with emergency lowering. The latter allows the equipment to be lowered if the drive unit were to fail. The comprehensive safety package is completed by protective grilles on the roof and in the lower section of the cab window. These protect both persons and the machine, particularly when working on stony terrain or during demolition work.



Absolute reliability – for peace of mind!

SANY's four-year warranty* gives you the assurance that you can fully count on your equipment.

* With participating partners

QUALITY

Because quality counts

Crawler excavators are high-performance machines that have to prove themselves again and again in the tough conditions of the construction site. We therefore make no compromises when it comes to quality. Clean robot-controlled welded seams and high-quality hydraulic line piping ensure that you can rely on your SANY. In addition, the all-round reinforcement of the upper structure and the all-metal panning protects against expensive damage – more minor damage can simply be straightened out when needed.

EFFICIENCY, COST-EFFECTIVENESS AND USER EXPERIENCE

USER EXPERIENCE

A DRIVER'S CAB THAT LEAVES NOTHING TO BE DESIRED

The SY365H cab has been designed down to the last detail to enable safe, fatigue-free operation. Its extensive insulation provides excellent protection for the driver against noise and dust. The airsuspension seat is the central element - it can be adjusted in various directions and therefore allows easy access to the controls and a perfect overview. Perfect for quick and accurate operation: the consoles are connected to the seat and move along with it. Some of the other elements adding to the comfort include heated seating, automatic air conditioning, a refrigerated compartment, a radio and a USB port.



USER EXPERIENCE

Spacious and practical

On the 10" touch display, the operator can, at any time, quickly and reliably call up the most important information and unit statuses. This includes the HD images of the two cameras fitted as standard. Simple handling, intuitive menu navigation and a choice of languages prevent incorrect operation. What's more, you can even reliably operate the 10" touch display when wearing gloves.



USER EXPERIENCE

Simplicity is key in maintenance

Regular inspection and maintenance work ensure a good performance and service life of the machine. We therefore make these tasks as easy as possible for the operator. The lubrication block allows quick, convenient lubrication of multiple lubrication points in one operation. The air filter is easily accessed from the ground and the oil dipstick above the operator's platform.





Our highlights – the added benefits SANY offers you:

- + Large, high-resolution 10" touch display
- + Rear camera
- + Seat with adjustable consoles
- + 2 auxiliary control lines
- + Programmable attachment devices
- + Automatic switching of the hydraulic system in hammer operation
- + Heavy Duty undercarriage and equipment
- + Very high engine power



ECONOMY

Maximise performance, minimise consumption

The water-cooled six-cylinder engine gives all the power necessary to really get stuck into excavation, quarrying or demolition. Furthermore, not only does the unit meet the strict requirements of Emission regulation Stage III, it is also extremely fuel-efficient and quiet.

ECONOMY

FLEXIBILITY AT THE PUSH OF A BUTTON

The hydraulic quick-coupler preparation is already included ex-works as standard and is incorporated into the operating concept. The two control circuits can be individually adjusted. The desired parameters can be saved for the respective attachment and called up at any time. The electric hammer valve makes it even easier to change attachment devices. It can be operated from the cab with the tool change and saves having to manually change over the return line in hammer operation. This function therefore facilitates the automatic change of attachment devices.



TECHNICAL SPECIFICATIONS

ENGINE

Model	ISUZU GH-6HK1XKSC
Type	Direct injection, 6-cylinder, 4 stroke turbocharged, inter-cooling and water-cooled
Exhaust emissions	Stage III
Rated power	212 kW / 2000 rpm
Max. torque	1 080 Nm / 1 500 rpm
Displacement	7.79 L

SERVICE REFILL CAPACITIES

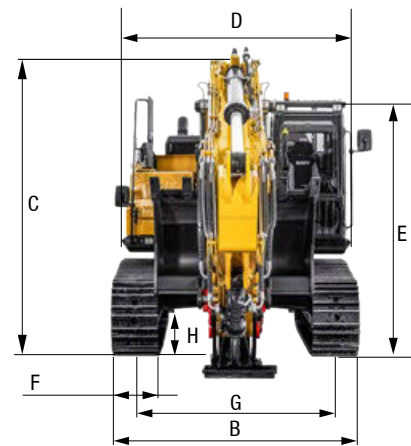
Fuel tank	690 L
Engine Oil	36 l
Radiator	12.3 L
Final Drive	2 x 8.5 L

PERFORMANCE

Swingspeed	9.5 rpm
Max. travel speed	5.5 km/h
Ground Pressure	65 kPa
Gradeability	35°
Bucket Digging Force	235 kN
Arm Digging Force	180 kN
Traveling tractive force	320 kN

OPERATING MASS

SY365H 36 000 kg



LIFTING CAPACITIES*

	Boom--	6500mm	Arm--				Width of track--				Counter weight--			
			2900mm		600mm		6900KG							
			3.0m	4.5m	6.0m	7.5m	9.0m							
			Longitudinal	Lateral	Longitudinal	Lateral	Longitudinal	Lateral	Longitudinal	Lateral	Longitudinal	Lateral		
7.5m	Kg													
6.0m	Kg							*7857	*7857					
4.5m	Kg			*12146	*12146	*9592	*9592	*8269	6856					
3.0m	Kg			*14650	*14650	*10745	9126	*8823	6638	*7696	5095			
1.5m	Kg			*16054	13197	*11633	8745	*9287	6434	*7819	5004			
地面	Kg			*16022	12950	*11951	8515	*9457	6293					
-1.5m	Kg		*14577	*14577	*15082	12942	*11590	8439	*9137	6242				
-3.0m	Kg		*16715	*16715	*13312	*13312	*10420	8499	*7924	6314				

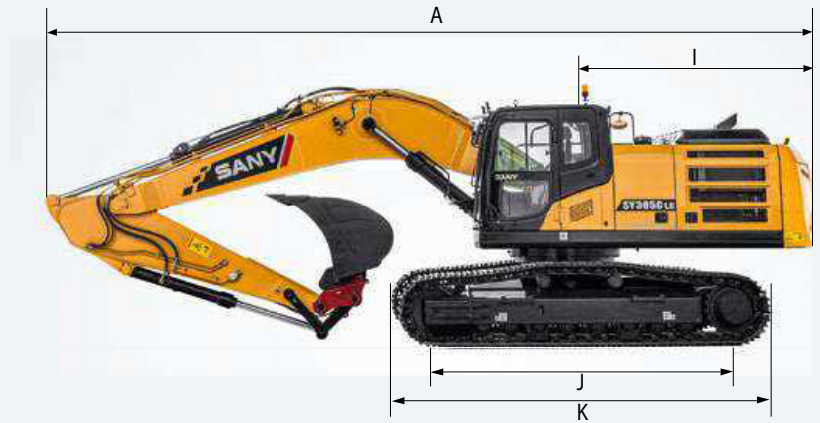
1. The lifting capacity is calculated in accordance with ISO10560 and SAEJ1097, where the limit coefficient of hydraulic system is 0.87 and tilting limit coefficient is 0.75;

2. Item with * is limited by hydraulic pressure and item without *** is limited by stability;

3. Lifting point is front support hole of arm (excluding the weight of bucket). It is necessary to deduct from the above lifting capacity if additional accessory is installed such as bucket etc.;

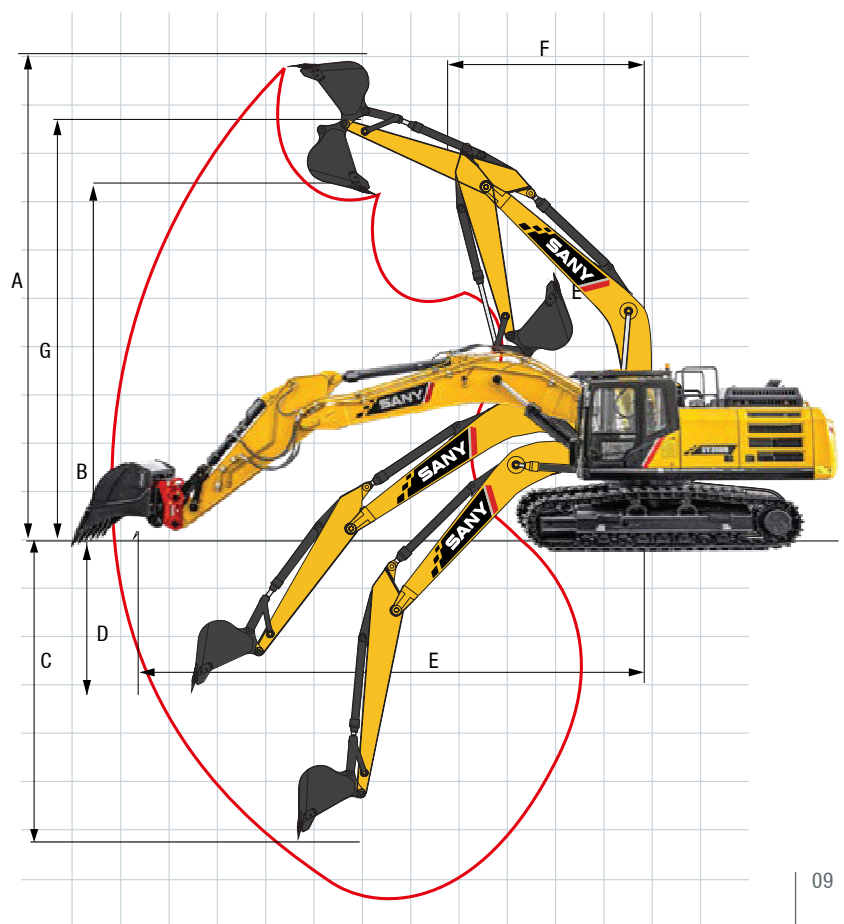
DIMENSIONS

A	Transport length	11 530 mm
B	Transport width*	3 190 mm
C	Overall width of upper structure	3 545 mm
D	Upper Width	3 150 mm
E	Overall height (cab top)	3 320 mm
F	Standard track shoe width	600 mm
G	Track gauge	2 590 mm
H	Min. ground clearance	550 mm
I	Tail swing radius	3 560 mm
J	Length to center of rollers	4 140 mm
K	Track length	5 065 mm



WORKING AREA

A	Max. digging height	9 890 mm
B	Max. unloading height	6 920 mm
C	Max. digging depth	7 050 mm
D	Max. vertical wall digging depth	3 970 mm
E	Max. digging reach	10 780 mm
F	Min. swing radius	4 495 mm
G	Max. height at min. swing radius	8 600 mm



Already with many extras ex works

The SY365H is equipped with many extras as standard. From the comfortable operator's cab to the automatic switching of the hydraulics, many features make day-to-day operation more efficient and safer.



OPERATORS COMFORT / CABINE

Automatic air conditioning C/H*	●
Radio and speaker	●
Armrests (adjustable)	●
12v outlets	●
USB port (music)	●
Airsuspension seat	●
Heated seat	●
Sky light openable	●
Integrated cooling box	●
10" touch display	●
ROPS/FOPS cabin with front protection	●
Rubberfloor	●

WORKING EQUIPMENT

Boom and arm load holding valves with overload indicator	●
Double acting circuit for hydraulic quick coupler with piping	●
Breaker&Shear line proportional on Joystick with piping	●
Rotation line on Joystick with piping	●
Rotation line proportional on Joystick with piping	●
Flow adjustment for attachments	●
Pressure adjustment for attachments	●
Ram protection on both sides of the upper structure	●

UNDERCARRIAGE

Steel tracks 600	●
Holes/loops for fixing	●

Standard equipment ● Special option ●

The standard and special options differ depending on the country in which the crawler excavator is delivered. If you have any questions, please contact your dealer directly.

* The air conditioner contains fluorinated greenhouse gases: Refrigerant type: HFC-134a, Global warming potential: 1 430, Quantity: 0.9 kg, CO₂e: 1.29 t

WORKING LIGHTS

Lights – front (LED)	●
Lights – boom (LED)	●
Lights – platform (LED)	●
Lights – back (LED)	●

ENGINE/ENGINE COMPARTMENT

Auto idle	●
Fuel pump	●
DPF	●
DOC	●

HYDRAULIC SYSTEM

Swing brake	●
2 speed travel	●
Piping for additional hydraulic function AUX 1	●
Piping for additional hydraulic function AUX 2	●
Hydr. Pre-pressure operating joysticks	●

SAFETY

Battery master switch	●
Travel Alarm	●
Warning beacon	●
Rear camera	●
Handrails	●
Lockable hoods	●
Lockable fuel cap	●

Parts supply – quick and reliable

With the purchase of a SANY crawler excavator you have made an investment in the future. Fast availability of spare parts is your guarantee of minimal downtimes and failure times.





FLEXIBLE POWERHOUSE

The SY365H makes it easy for you to work efficiently. And with as much flexibility as you've always wanted. With the automatic switching of the hammer valve and the individually programmable attachment devices, even challenging attachment devices can be changed over quickly and easily. This makes operation more efficient and requires fewer compromises when changing tasks. A flexible powerhouse, the SY365H is a real hero at work, powering through a lot of work, wherever it is put to use.

STABLE FOUNDATION

The "H" on the SY365 stands for "Heavy Duty". Or for high-quality and robust. So, the HD undercarriage is not only a guarantee of stability even in tough conditions, but also the basis for maximum service life and maximum performance.

SO COMFORTABLE, SO PRODUCTIVE

You can feel really comfortable in this cab. Large, clearly laid out, ergonomic. With an individually adjustable seat, adjustable consoles and a large 10" touch display.

YOU CAN RELY ON

The arm and boom have been designed with optimum weight distribution for maximum lifting capacity. The areas that are subject to most stress in the tough everyday conditions of the construction site are made of high-strength cast parts. This reduces load stress and increases service life.

LOOKING GOOD

To ensure that the driver always has a clear view of the entire working environment, the SY390H has a camera installed at the rear. The display shows the images in high definition. The rear view is also unhindered thanks to the flat engine bonnet.

OPTIMISED EFFICIENCY

The SY365H tackles work with great power. The 212 kW Isuzu engine and powerful Kawasaki hydraulics stand up to even the toughest challenges, combining dynamics with precision.

MAXIMUM PRODUCTIVITY

With every job, the SY365H proves its flexibility again. For each individual task you can select the most suitable operating mode: high performance or minimum fuel consumption. Furthermore, two standard auxiliary control circuits add to its exemplary flexibility.

TECHNICAL HIGHLIGHTS

Engine	ISUZU GH-6HK1XKSC
Rated power	212 kW / 2 000 rpm
Max. torque	1 080 Nm / 1 500 rpm
Max. travel speed	5,5 km/h
Swingspeed	9,5 rpm

Not all products are available in all markets. As part of our continuous improvement process, we reserve the right to modify specifications and designs without giving prior notice. The figures may contain additional options.

YELLO EQUIPMENT
SANY AUTHORISED DEALER

P: 1300 093 556

W: YELLOEQUIPMENT.COM

YELLOTM
EQUIPMENT